

PleurX Drains– Draining Fluid and Dressing Change

Supplies	Gloves	PleurX Drainage Kit (includes procedure pack)
-----------------	--------	---

1. Review or obtain provider's order.
2. Gather and prepare necessary equipment and supplies.
3. Wash hands thoroughly prior to and after contact with the patient.
4. Confirm the patient's identity.
5. Provide privacy.
6. Explain procedure to patient and/or caregiver.
7. Raise the bed to waist level before providing care.
8. Put on gloves and, as needed, other protective equipment.
9. Remove the dressings from over and around the catheter.
10. Note any redness, swelling, fluid drainage, or subcutaneous emphysema around the catheter and notify the medical provider if present.
11. Remove gloves and wash hands, put on new gloves.
12. Open the drainage kit bag.
13. Open the procedure pack. Set the adhesive dressing aside.
14. Set the bundle with the blue wrapping on a table and carefully unfold the blue wrapping maintaining sterility inside.
15. Open the vacuum bottle bag and remove the bottle with the attached drainage line maintaining sterile technique. Set the bottle near the blue wrapping and place the access tip on the wrapping near the other sterile items.
16. Put on the sterile gloves.
17. Tear open the 3 alcohol pads, but do not remove the pads from the pouches. Place them on the blue wrapping.
18. Prepare the drainage bottle. Close the roller clamp on the drainage line completely by rolling the wheel on the clamp toward the bottle.
19. Hold the bottle's drainage line near the access tip and remove the cover from the access tip with your other hand by twisting it and pulling gently. Set the access tip back on the sterile blue wrapping.
20. Hold the base of the catheter valve and remove the cap by twisting it counterclockwise and pulling gently. Discard the cap.
21. While holding the base of the catheter valve in one hand, clean around the valve cap with an alcohol pad.
22. Continue holding the catheter near the valve. Pick up the drainage line with your other hand and insert the access tip securely into the catheter valve. The valve is locked together when a click is heard and felt. Keep the valve on the PleurX catheter and the access tip on the drainage system clean and free of contamination.

Our Hospice of South Central Indiana Nursing- Clinical Guidelines

23. The support clip on the vacuum bottle ensures that the vacuum seal on the bottle is not broken before using the bottle. Remove the support clip by grasping the upper part of the flange and pulling outward.
24. Hold the bottle steady with one hand and push the white “T” plunger down with the other hand to puncture the foil seal. The vacuum in the bottle will pull the flexible bottle cap down.
25. Release the roller clamp on the drainage line to begin drainage. Fluid will flow into the vacuum bottle. Roll the wheel to regulate the flow of fluid. If the patient experiences pain, slow the flow rate or stop the flow for a few minutes, then resume drainage.
26. The flow into the bottle may slow down when the fluid is almost completely drained. When the flow stops or the 1000 ml bottle is filled, roll the clamp on the drainage line completely closed. The drainage will usually take 5-15 minutes.
 - a. **Do not drain more than 1000 mL from the chest / 2000 mL from the abdomen at any one time unless provider orders.**
27. Pull the access tip out of the valve in a firm, smooth motion when drainage is completed and set the drainage line down.
28. Clean the valve with an alcohol pad, allowing alcohol to dry.
29. Place the new cap over the catheter valve and twist it clockwise until it snaps into its locked position.
30. Clean around the catheter site with an alcohol pads from the procedure pak, allowing alcohol to dry.
31. Place the foam catheter pad around the catheter.
32. Wind the catheter into loops and place it over the foam pad.
33. Cover the catheter with the gauze pads.
34. Remove the gloves from both hands.
35. Take the self-adhesive dressing and place on center over gauze pads.
36. Date and initial dressing.
37. Discard used supplies in appropriate receptacles.
38. Remove and discard your gloves and other personal protective equipment worn.
39. Perform hand hygiene.
40. Contact provider if patient does not tolerate draining within these parameters, or if patient requires additional draining.
41. Document drainage amount, appearance, patient’s response and any reported abnormal patient assessments, assessment of skin at catheter site in the medical record.

Attachments: Drainage Guidelines- PleurX Pleural Catheter System

References:

Lippincott (2023, August 21). *Pleural catheter for recurrent effusion management and care, oncology*. Lippincott Solutions.



Our Hospice of South Central Indiana Nursing- Clinical Guidelines

PleurX Pleural Catheter System (2024). BD. Retrieved July 16, 2024, from <https://www.bd.com/en-us/products-and-solutions/products/product-families/pleurx-pleural-catheter-system>

PleurX Drainage Procedure Video- BD: <https://www.youtube.com/watch?v=VMr11BXbip4>

Original Author: Molly Jenkins, Staff Development Coordinator

Historical Reviews & Revisions:

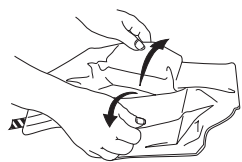
Review Date	Reviewer's Name(s)	Changes Made? (YES or NO)
5/12/2025	Dr. Anderson, Amy Lowe, Clinical Director, Shannon Johnson, Mngr Clinical Compliance	New, approved

Drainage Guidelines

PleurX™ Pleural Catheter System PeritX™ Peritoneal Catheter System

These drainage instructions are not intended as a replacement for the full drainage instructions for use. Please consult the Drainage Procedure Instructions for Use for indications, warnings, cautions and full drainage procedure instructions. You may also watch our instructional drainage video at bd.com/drainage.

Getting started: Have all drainage supplies ready, then thoroughly wash your hands.



- 1** Open all packaging. Unfold blue wrapping. Place bottle near wrapping and lay access tip on blue wrapping.

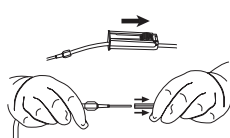


- 2** Pick each glove up by the wrist cuff and put them on.

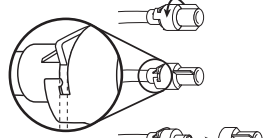


- 3** Tear open alcohol pad pouches. Place the open alcohol pad pouches on blue wrapping a short distance from sterile items.

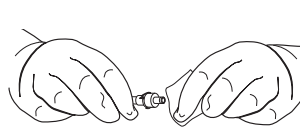
Connecting the drainage bottle: Be sure to keep the end of the catheter and access tip clean.



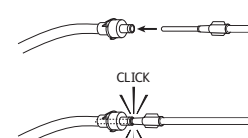
- 4** Close roller clamp completely by rolling the wheel on roller clamp toward bottle. Remove access tip cover by twisting and gently pulling. Place access tip on blue wrapping.



- 5** Take valve cap off catheter.

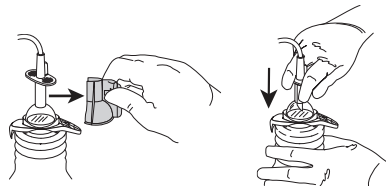


- 6** Clean around valve opening with first alcohol pad.

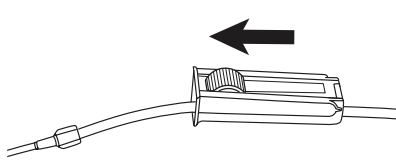


- 7** Insert the access tip into catheter valve until it clicks.

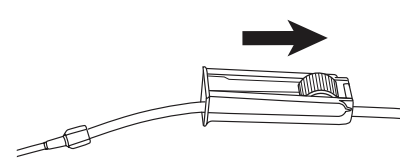
Draining fluid: Do not drain more than 1,000 mL from your chest or 2,000 mL from your abdomen at any one time.



- 8** Remove support clip from top of drainage bottle and push down T plunger.

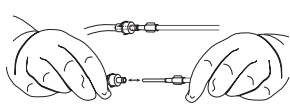


- 9** To begin draining, roll the wheel on the roller clamp away from vacuum bottle.

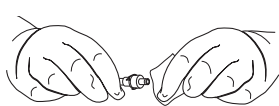


- 10** When finished draining, completely close the roller clamp by rolling the wheel toward the bottle.

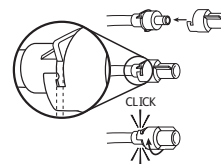
Final steps and disposal: If you have any questions or concerns, contact your doctor or nurse.



- 11** Pull access tip out of the valve and put the drainage line down.



- 12** Clean around the valve opening with second alcohol pad.



- 13** Place new cap on catheter valve and twist it until it clicks into its locked position.



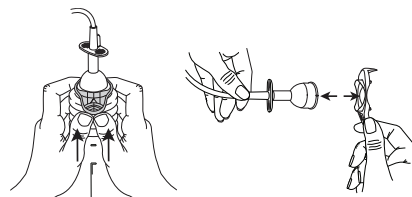
- 14** Clean around catheter site with third alcohol pad.



- 15** Place foam catheter pad around catheter and wind catheter on top of pad. Cover catheter with gauze pads.



- 16** Remove gloves from both hands. Apply self-adhesive dressing over pads.



- 17** Remove the bottle opener and cap from the bottle.



- 19** Empty bottle into toilet. Place bottle in a plastic bag, seal tightly and discard.

- 18** Remove the bottle opener from the drainage line and use the bottle opener to enlarge the hole in the foil seal.

PleurX™
Pleural Catheter System

PeritX™
Peritoneal Catheter System